

Birch Curriculum Information Sheet

Spring Term 1

We are Explorers!

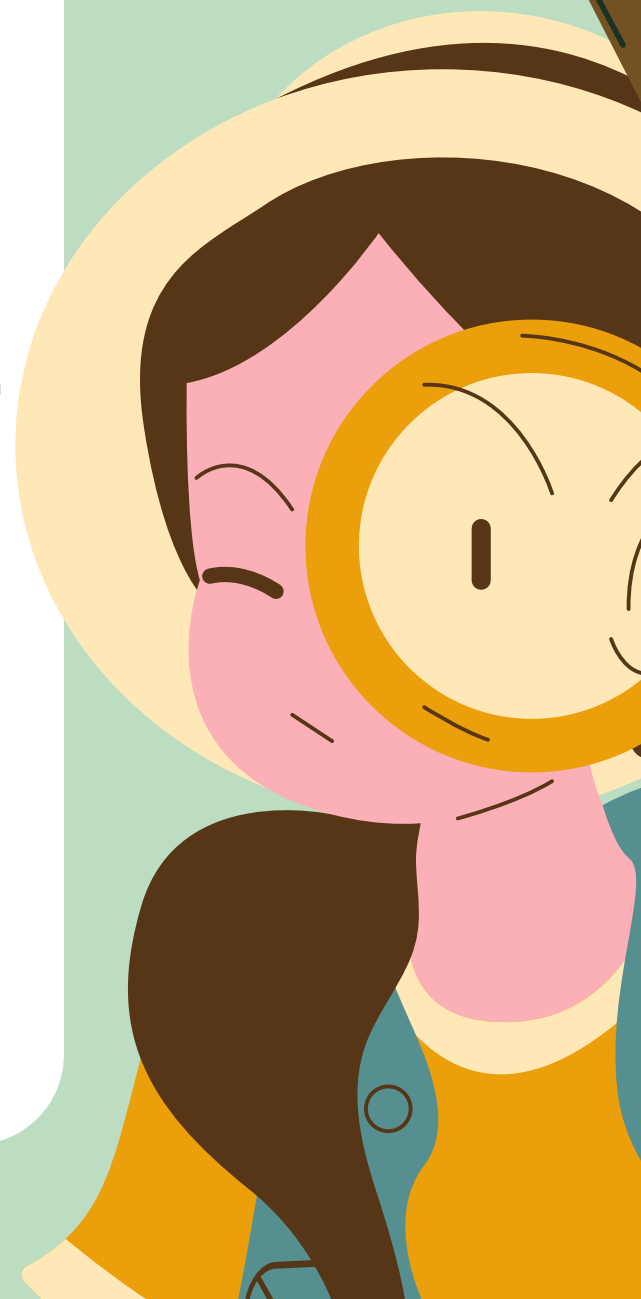
Welcome back! We hope you all had a restful and merry Christmas and wish you all a happy new year!

This term we are learning about explorers and how people travel around the world. As always, if you have any questions or queries please do speak to Mrs Love or send me a Dojo message.

Phonics and Literacy

The children are continuing to revise and learn new sounds this term. The new sounds we are learning are the vowel digraphs which will help the children to be able to sound out to read and spell new words.

We are also building the children's ability to write sentences using capital letters, finger spaces and full stops.

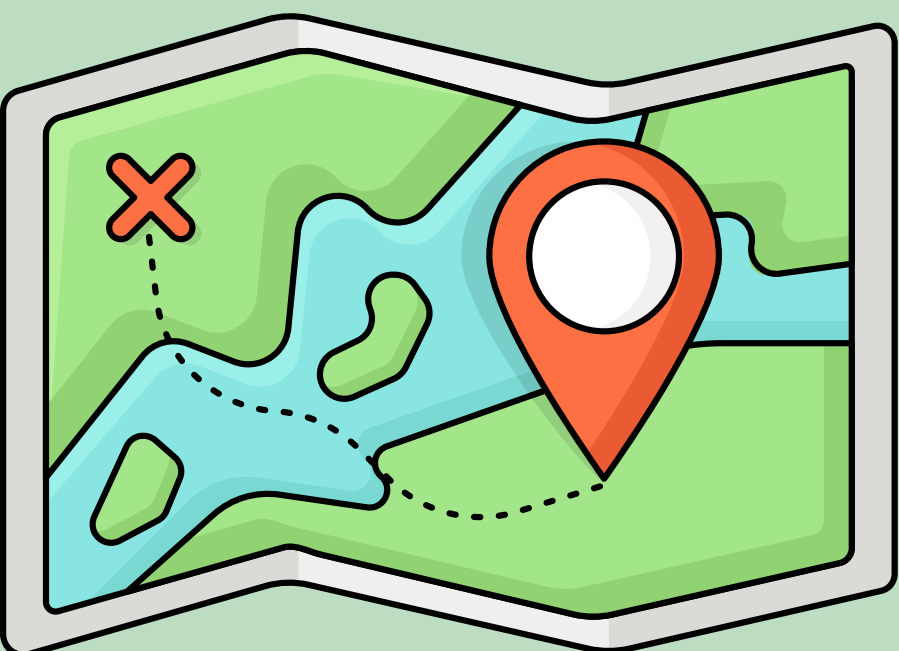


Maths

The children are consolidating a deep understanding of the numbers 0–8. We will be finding ways to make 5 in different ways which leads us onto finding out how addition and subtraction works. We will also be exploring how to find out 1 more and 1 less from a given number using different methods. The children will be investigating mass and capacity in practical ways and learning new vocabulary in our maths lessons to support their learning.

LET'S GO

ADVENTURE



Understanding the World

This term we are using texts to support the children's learning in finding out about where they live and the wider world. We are sharing 'The Boy Who Sailed the World' to explore adventures and travelling in different ways. We will be thinking about our own country and how this compares with countries that are hotter or colder than our own. We will then be using 'Martha Maps it Out' to investigate how we can use maps to identify where we live, human and physical features and how maps can be used by in different ways to guide us in our travels. We will also be finding out about the famous explorer Amelia Earhart and her explorations as a significant person from history.

Expressive Arts and Design

We will be taking inspiration from the sea and land around us to create our own pieces of art using a range of media. We will be using different sized paint brushes to create paintings and finding out how to make tones of colours to add interest and texture to our work.

We will be looking at the painting 'The Great Wave' by Katsushika Hokusai as well as listening to music inspired by water.

We will also be designing, making and starting to evaluate our own constructions in DT. The children will be making boats using different materials and finding out which materials make better boats and why.

Personal, Social and Emotional Development

In PSED we will continue to work with the children on their understanding of themselves and the building of friendships with their peers. We are focusing on the learning attitudes of being resilient and reflective. We will be encouraging independence this term where the children can build on the skills they have already learnt and will be encouraged to take responsibility for themselves and their classroom through small jobs and tasks.



