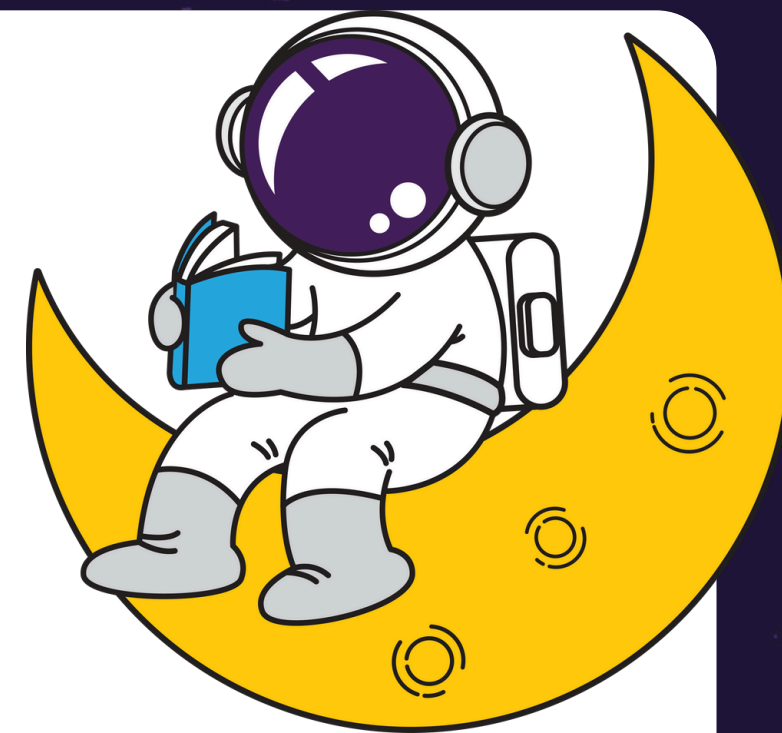


# PARENT CURRICULUM INFORMATION

Spring Term 1

## To Infinity and Beyond



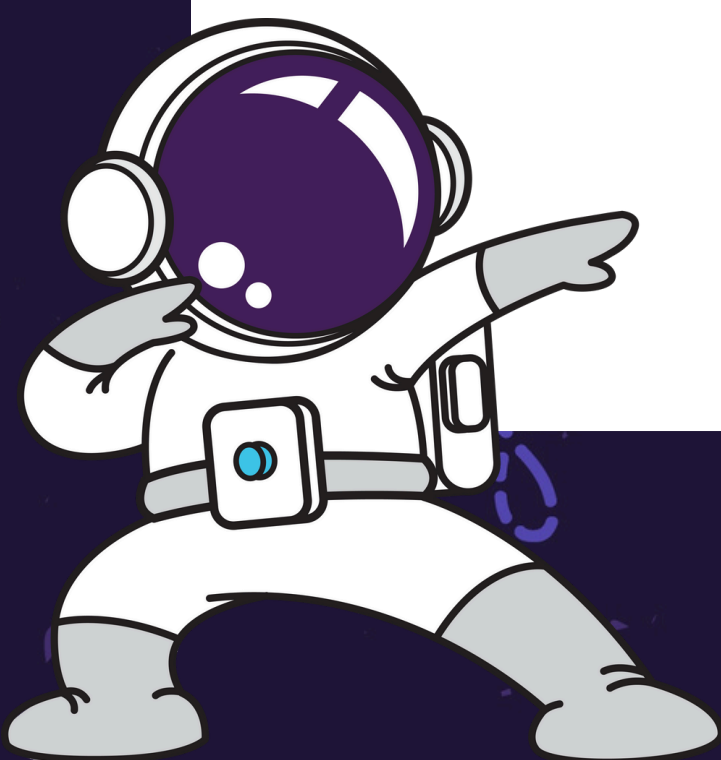
What We Will Learn ...

### Communication and Language

During this half term we will be concentrating on expanding the children's vocabulary e.g. the language linked to space, and for them to start using their words to communicate with their friends. We will also be emphasising the importance of listening to each other and to the staff. We will be encouraging the children to express their point of view and 'debate' when they disagree with an adult and friend, whilst listening to each other.

### Personal, Social and Emotional Development

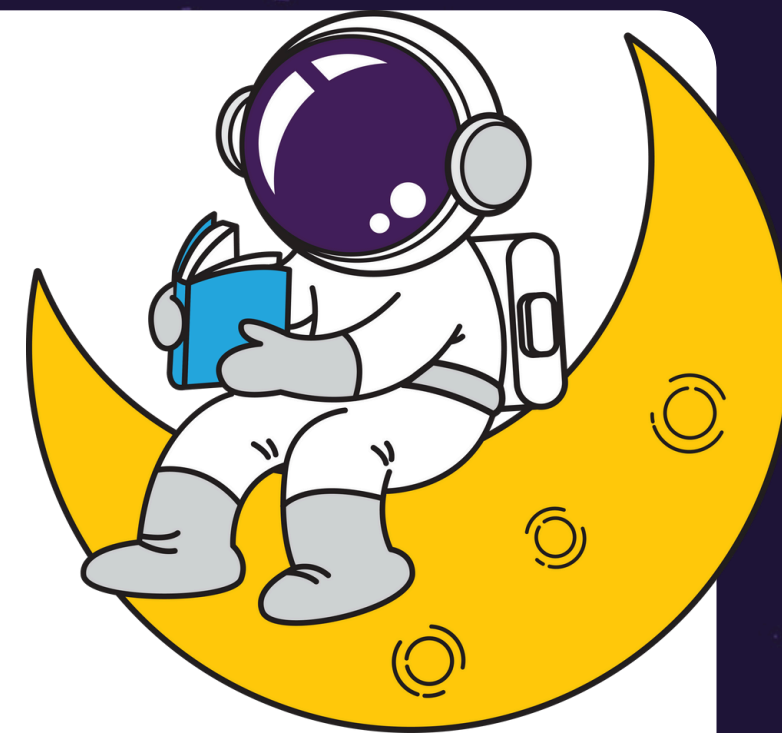
It is very important that children learn to get along with each other. Some children find this easier than others. As staff, we will continue to work with the children in the areas to ensure that they learn to share, continue to form friendships with staff and peers and self-regulate using the strategies we have given them. We will teach the children how to negotiate with each other and how to use their words to negotiate.



# PARENT CURRICULUM INFORMATION

Spring Term 1

## To Infinity and Beyond



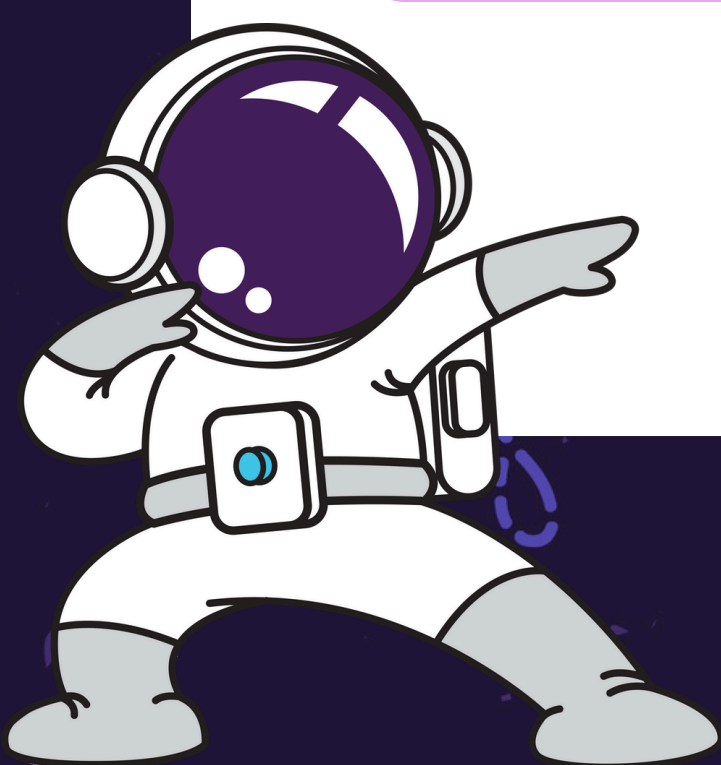
What We Will Learn ...

### Physical Development

We look at both gross and fine motor skills and develop both of these during your child's time in EYFS. In Nursery, we concentrate on developing muscle tone in the core with tummy time, play dough, threading, bike riding etc to develop the whole body ready to start writing in FS2. These early steps are crucial in a child's development. We will be looking at pencil control and how your child holds their pencil during this half term and will continue our weekly PE lessons.

### Literacy

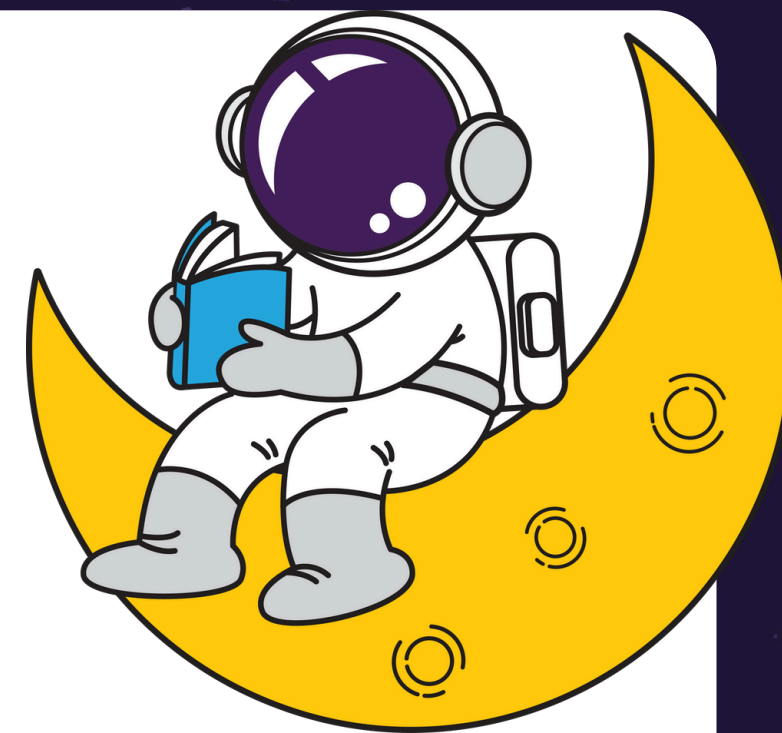
During this term we will be focussing on the children producing work that is 'recognisable' and working on name recognition and name writing. We will continue with our phonics; clapping syllables (ask them to clap a word with different amount of syllables e.g. cat, umbrella etc.), thinking about what letter a word begins with (play I spy), recognising letters that are significant to them in the environment e.g. "That letter is in my name.". Our younger children will also be listening to environmental sounds, distinguishing the different sounds they hear.



# PARENT CURRICULUM INFORMATION

Spring Term 1

## To Infinity and Beyond



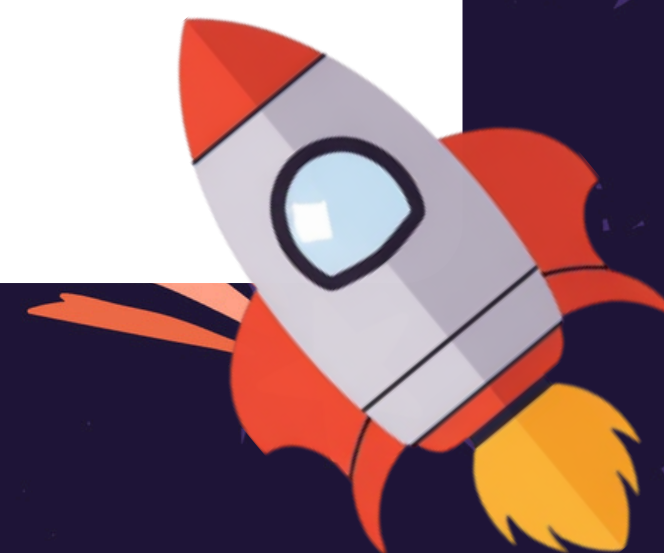
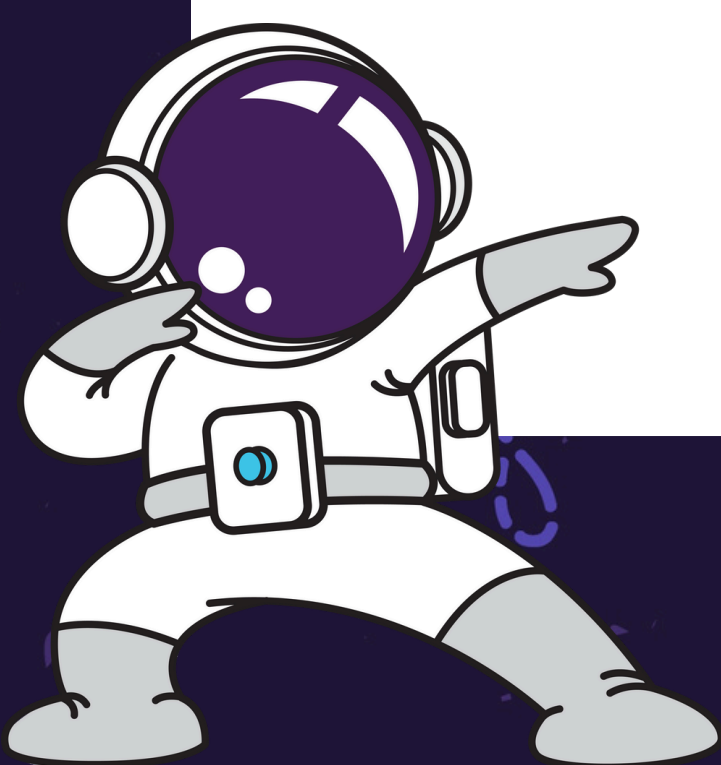
What We Will Learn ...

### Maths

Throughout Spring 1 we will be learning about the numbers 5,6&7. We will learn how these can be represented on our fingers, how they can be split in different ways but still be the same number, e.g.  $4+1=5$ ,  $3+2=5$  etc. We will be recalling the names of 2D shapes and their properties and beginning to learn the names of 3D shapes. We will also be working on number recognition to 10.

### Understanding the World

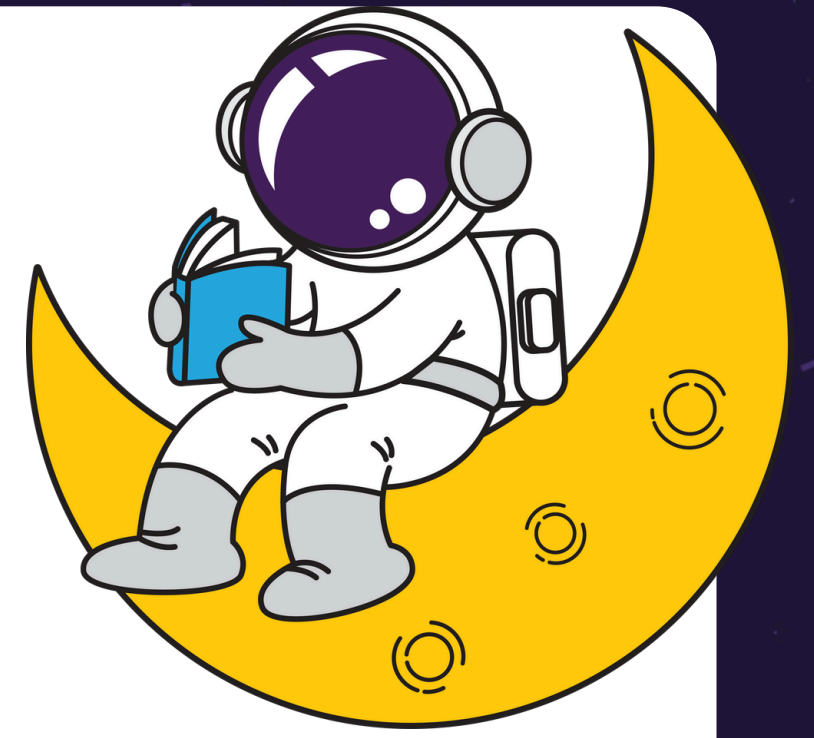
This half term we will be looking at Space and the planets in our topic "To Infinity and Beyond". We will learn about the planets, how they are different from each other, what the sun is, and what gravity is ("It pulls us back down to earth!"). This will all be done through our books and will link in to our Literacy, Communication and Language and expressive Arts.



# PARENT CURRICULUM INFORMATION

Spring Term 1

## To Infinity and Beyond



### Books & What Can I do To Help?

#### Expressive Arts

Linking to our topic, we will be making lots of space themed pictures/creations and teaching them new techniques for painting and creating. There will also be the usual paint and creative materials out for their own designs and to replicate things that we have taught them.

#### Some Key Vocabulary.

Planet  
Star  
Astronaut  
Rocket  
Earth  
Sun  
Moon  
Gravity

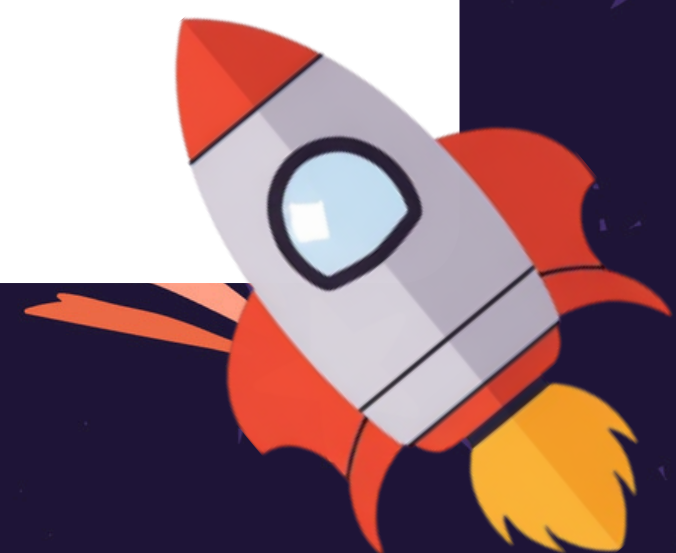
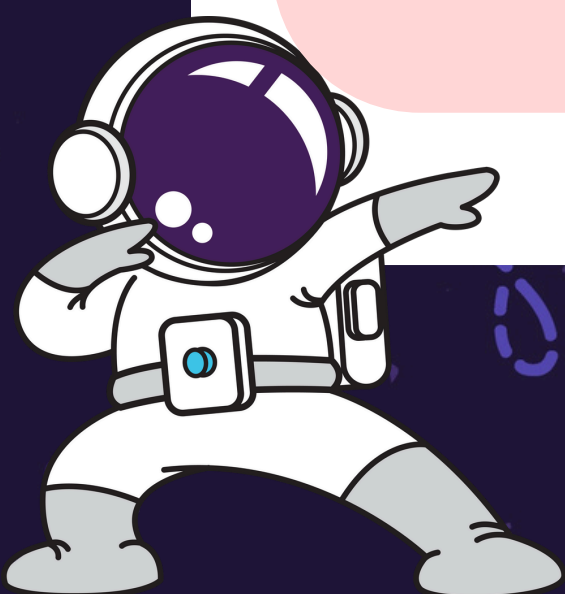
#### Books we will read this term ...

Whatever Next  
Meet the Planets  
Zoom to the Moon  
On the Moon  
The Way Back Home

**Each half term we will also cover a traditional tale:**

Little Red Riding Hood  
And a whole lot of reading for pleasure books!

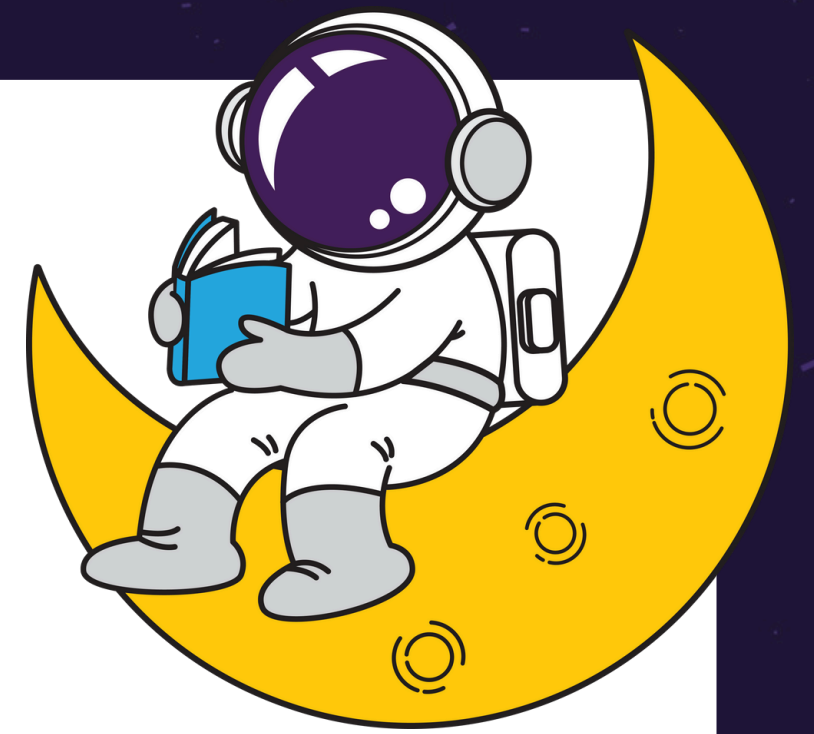
And remember, reading to a child six to seven days a week puts them almost a year ahead of those who are not being read to!



# PARENT CURRICULUM INFORMATION

Spring Term 1

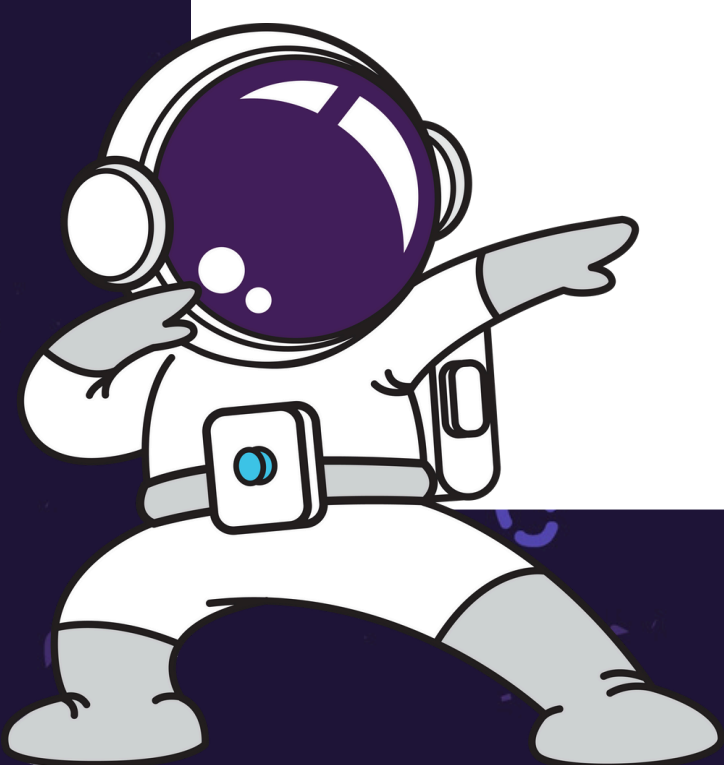
## To Infinity and Beyond



What Can I do To Help?

### **Physical Development – Things I can do at home ...**

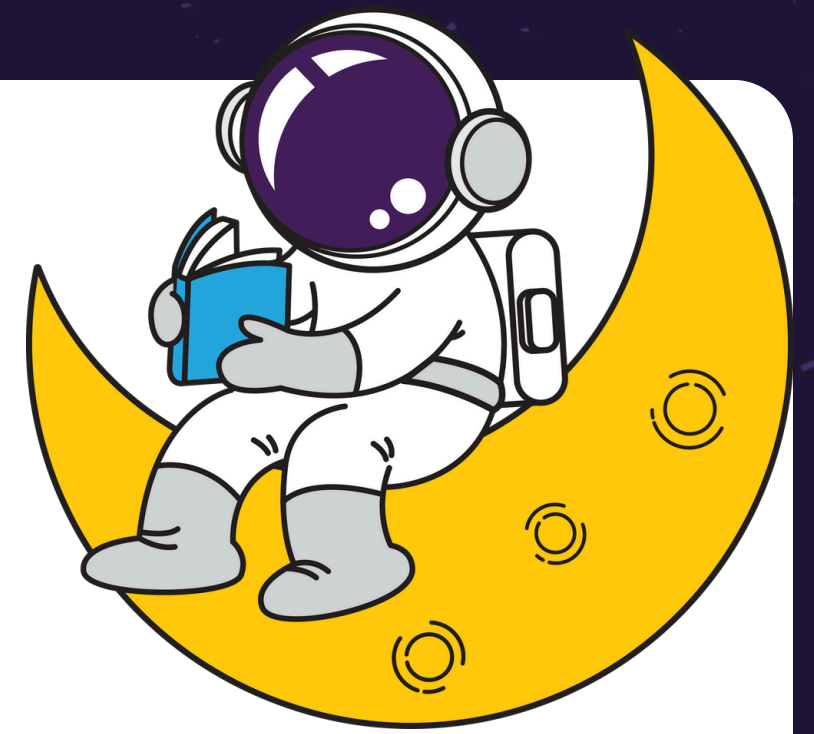
As mentioned previously, we look at both gross and fine motor skills during your child's time in EYFS. At home, you can encourage your child to play on their tummy, e.g. with cars, blocks, dolls, reading books etc., thread pasta onto an old shoe lace, play with play dough (watch Dough Disco clips on YouTube), use pegs to pick things up (socks, pants) or to help hang the washing out, play with Lego/Duplo (pushing and pulling it together/ apart is good for muscle development) ... For more gross motor development you can encourage your child to use a two-wheel scooter, ride a bike, kick and catch a ball ... and have lots of fun doing it! If your child is still finding number recognition difficult, pointing out numbers at home in the environment (car registrations, door numbers etc) is a great way to help them learn.



# PARENT CURRICULUM INFORMATION

Spring Term 1

## To Infinity and Beyond



### Other Information

#### Key Questions

Which planet do we live on?  
What can you see in our night sky?  
What is an astronaut?  
How do people travel in space?  
Can you name any of the planets?  
What is gravity?

#### Other Information ...

We will be learning about Mae Jemison (the first black woman to go into space) and Neil Armstrong (the first man to walk on the moon). We will also be learning about the artist Alma Thomas and painting in the same style. There will be many more things along the way that will be picked up with the children's interests that we don't know about yet ...

#### Dates for your Diary

**16.1.26** Sense of Belonging Day

**27.1.26** Explorer Dome 11am

**2.2.26 - 6.2.26**

National Story Telling Week

**10.2.26** – Safer Internet day

**9.2.26 - 11.2.26**

Parents Meeting

**13.2.26** INSET DAY - SCHOOL CLOSED

**23.2.26** School reopens

